

# HS-880 SERIES

Plate Materials: POM-DP,POM-LF  
Pin Material: Cold rolled austenitic stainless steel



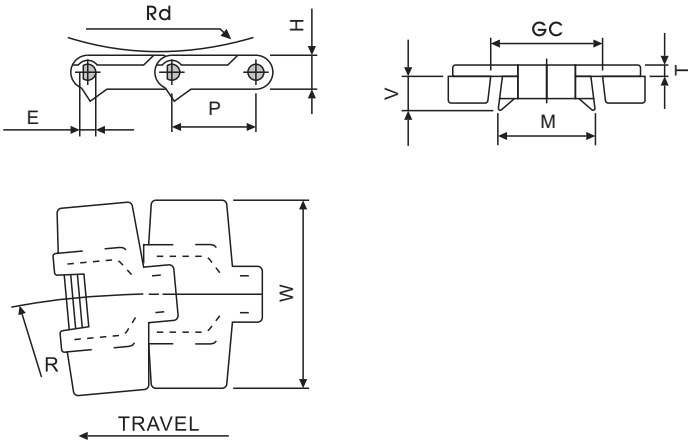
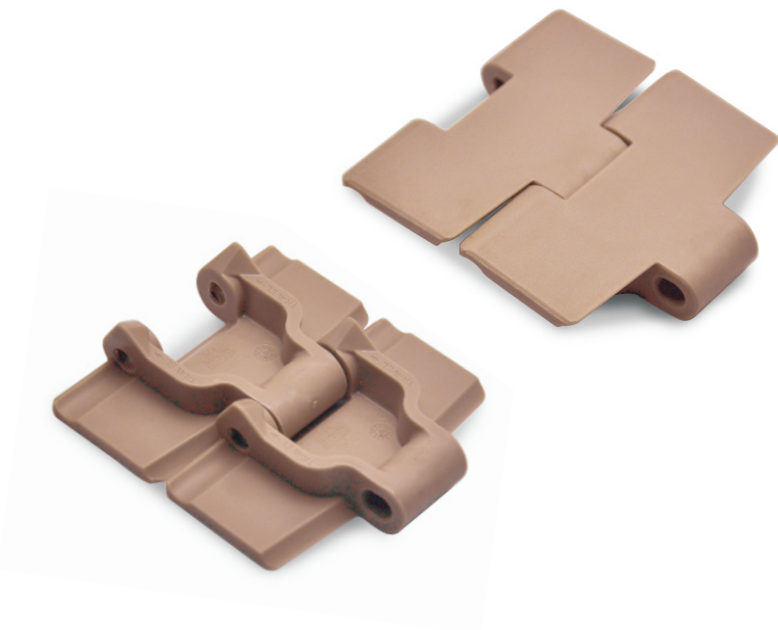
Materials



Sprockets



Applications



Dimension	mm	inches
P	38.1	1.500
R	400.0	15.748
W	—	—
H	20.0	0.787
T	4.0	0.157
E	7.1	0.280
M	42.9	1.689
V	16.0	0.630
RD	40.0	1.575
GC(Straight)	44.5	1.752
GC(Curve)	41.4	1.630

## HS-880 (Side Flexing Plastic Chain)

CHARACTERISTICS									
	Width W		Working Load		Radius		Reverse Radius		Weight
	(mm)	(inch)	N(21℃)	lbs(21℃)	(mm)	(inch)	(mm)	(inch)	(kg/m)
HS-880-K325	82.6	3.25	2100	472	457	18.00	40	1.57	0.89
HS-880-K350	88.9	3.50	2100	472	457	18.00	40	1.57	0.96
HS-880-K450	114.3	4.50	2100	472	457	18.00	40	1.57	1.04
HS-880-K450	190.5	7.50	2100	472	457	18.00	40	1.57	1.74