

HS-831 SERIES

Plate Materials: POM-DP,POM-LF
Pin Material: Cold rolled austenitic stainless steel



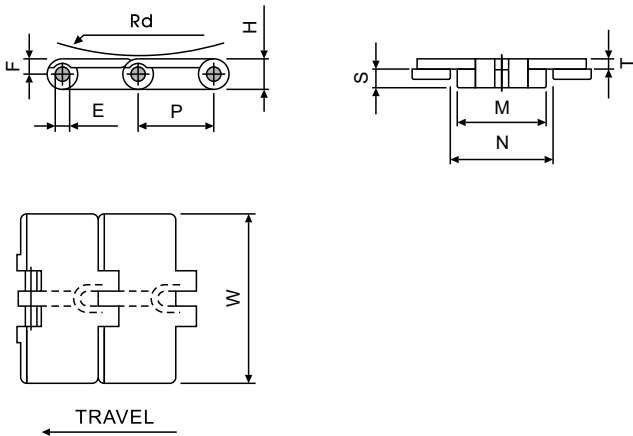
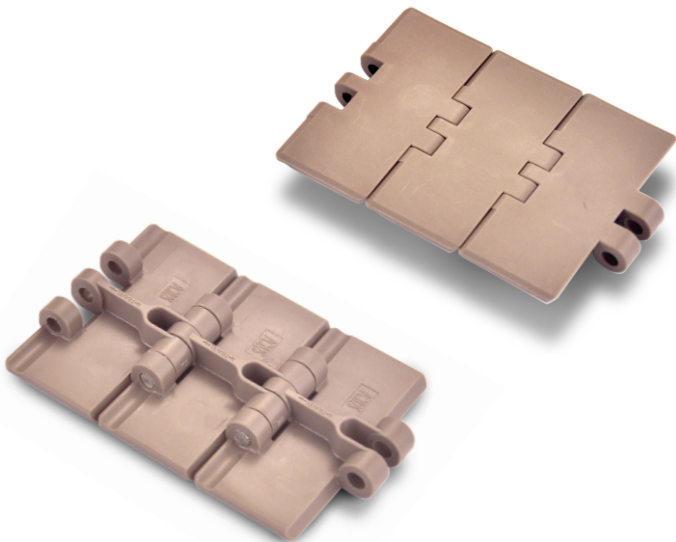
Materials



Sprockets
87/88/
89/98/99



Applications



Dimension	mm	inches
P	38.1	1.500
W	—	—
E	6.2	0.200
T	4.8	0.157
F	7.2	0.563
N	44.5	1.434
M	42.1	1.343
S	8.7	0.469
H	13.5	0.496

HS-831 (Straight Running Plastic Chain)

CHARACTERISTICS									
	Width W		Working Load		Radius		Reverse Radius		Weight
	(mm)	(inch)	N(21℃)	lbs(21℃)	(mm)	(inch)	(mm)	(inch)	(kg/m)
HS-831-K325	82.5	3.25	1230	277	—	—	50	1.97	1.00
HS-831-K400	101.6	4.00	1230	277	—	—	50	1.97	1.15
HS-831-K450	114.3	4.50	1230	277	—	—	50	1.97	1.24
HS-831-K600	152.4	6.00	1230	277	—	—	50	1.97	1.51
HS-831-K750	190.5	7.50	1230	277	—	—	50	1.97	1.76