

HS-1873G4 SERIES

Plate Materials: POM-DP,POM-LF
Base Chain Material: Carbon steel, Stainless steel



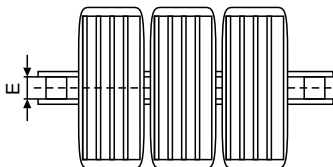
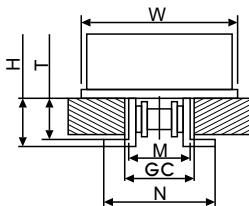
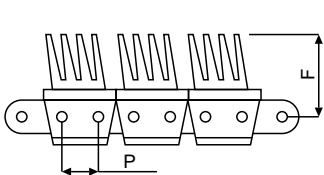
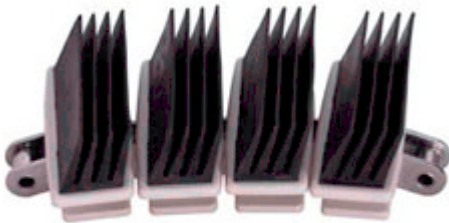
Materials



Sprockets



Applications



Dimension	mm	inches
P	19.05	0.750
M	32.0	1.260
W	—	—
H	24.5	0.965
T	20.6	0.787
F	44.0	1.732
N	53.8	2.087
E	12.7	0.472
GC(Straight)	33.3	1.311
GC(Curve)	34.6	1.362

HS-1873G4 (Side Flexing Plastic Chain)

CHARACTERISTICS									
	Width W		Working Load		Radius		Reverse Radius		Weight
	(mm)	(inch)	N(21℃)	lbs(21℃)	(mm)	(inch)	(mm)	(inch)	(kg/m)
HS-1873G4-K325	82.6	3.25	3400	765	356	14.0	305	24.0	3.00
HS-1873G4-K450	114.3	4.50	3400	765	356	14.0	305	24.0	3.40

*The above tensile force is for Carbon steel,Please consult our engineer for that of Stainless steel.