

HS-1873T-GD SERIES

Plate Materials: POM-DP,POM-LF

Base Chain Material: Carbon steel, Stainless steel



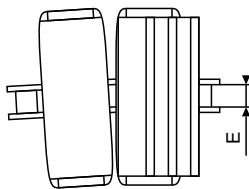
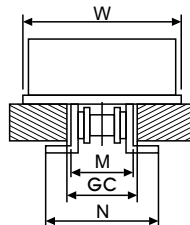
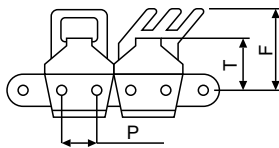
Materials



Sprockets



Applications



| Dimension | mm | inches |
|--------------|-------|--------|
| P | 19.05 | 0.750 |
| M | 32.0 | 1.260 |
| W | 95.3 | 3.750 |
| T | 28.6 | 1.126 |
| F | 44.4 | 1.748 |
| N | 56.5 | 2.224 |
| E | 12.7 | 0.472 |
| GC(Straight) | 34.1 | 1.343 |
| GC(Curve) | 34.9 | 1.374 |

HS-1873T-GD (Side Flexing Plastic Chain)

CHARACTERISTICS

| | Width W | | Working Load | | Radius | | Reverse Radius | | Weight |
|--------------------|---------|--------|--------------|-----------|--------|--------|----------------|--------|--------|
| | (mm) | (inch) | N(21°C) | lbs(21°C) | (mm) | (inch) | (mm) | (inch) | (kg/m) |
| HS-1873TAB-GD K375 | 95.3 | 3.75 | 3400 | 765 | 381 | 15.0 | 305 | 24.0 | 2.24 |
| HS-1873TAB-GJ K375 | 95.3 | 3.75 | 3400 | 765 | 356 | 14.0 | 305 | 24.0 | 2.80 |

*The above tensile force is for Carbon steel, Please consult our engineer for that of Stainless steel.