

## HS-915-EL SERIES

**Plate Materials: P**

**Pad Material: Nitrilic rubber PG**

**Pin Material: Cold rolled austenitic stainless steel**



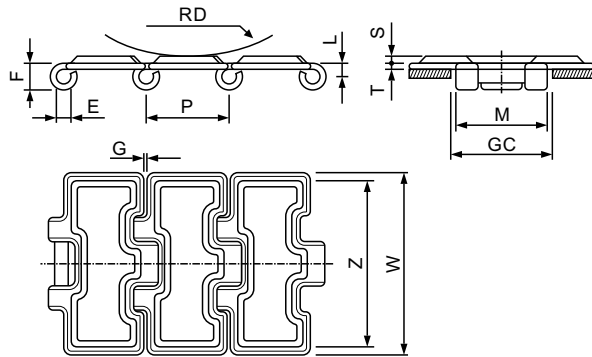
Materials



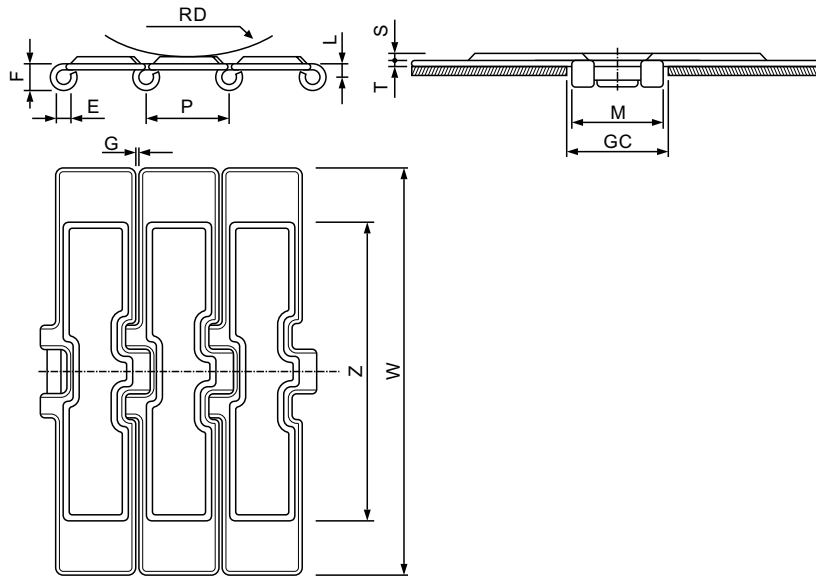
Sprockets



Applications



Dimension	mm	inches
P	38.1	1.500
T	3.0	0.118
S	3.0	0.118
M	42.0	1.654
L	6.4	0.252
H	13.0	0.512
E	6.4	0.250
Z	76.0	2.992
G	1.6	0.063
RD	150.0	5.906
GC	44.0	1.732



Dimension	mm	inches
P	38.1	1.500
T	3.0	0.118
S	3.0	0.118
M	42.0	1.654
L	6.4	0.252
H	13.0	0.512
E	6.4	0.250
Z	146.0	5.748
G	1.6	0.063
RD	150.0	5.906
GC	44.0	1.732

### HS-915-EL (Straight Running-Single Hinge-Rubberized Surface)

#### CHARACTERISTICS

	Width W		Working Load		Sideflexing Radius		Weight
	(mm)	(inch)	N(21°C)	lbs(21°C)	(mm)	(inch)	(kg/m)
HS-915M-EL K3 1/4	82.6	3.25	8500	1913	-	-	2.57
HS-915M-EL K4 1/2	114.3	4.50	8500	1913	-	-	3.28
HS-915M-EL K7 1/2	190.5	7.50	8500	1913	-	-	4.99